



# Western

Biomedical Imaging  
Research Centre

SEMINAR  
SERIES  
[www.birc.ca](http://www.birc.ca)



**October 25th, 2018; 1:00 - 1:45 pm**  
**Pizza will be served**

**Dr. Flemming Littrup Andersen, PhD**  
Rigshospitalet, University of Copenhagen, Denmark



**Dr. Claes Noehr Ladefoged, PhD**  
Rigshospitalet, University of Copenhagen, Denmark

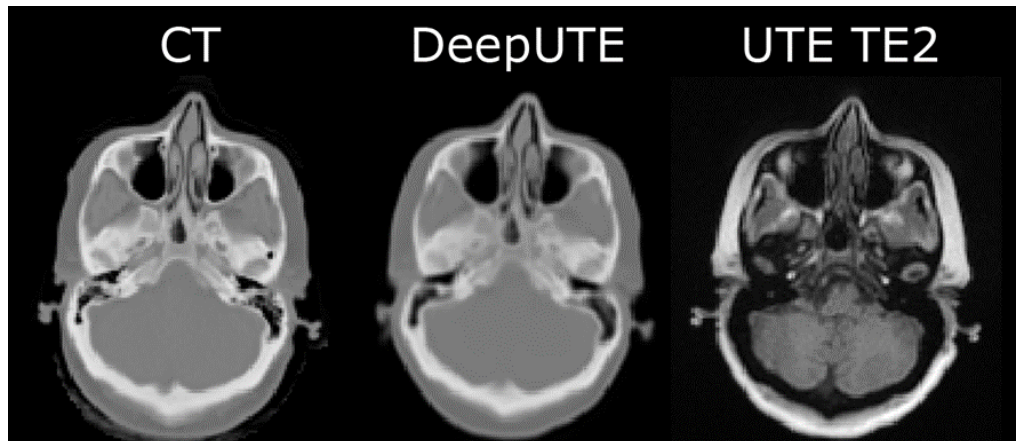
## Title: Applications of Artificial Intelligence for Imaging

**Rooms 1 & 2  
(E1-126 & E1-128)  
St. Joseph's Hospital**

*The BIRC Seminar Series  
is sponsored by  
BIRC*

Contact:  
Shelagh Ross  
tel. 519-646-6100  
ext. 64143  
[ssross@lawsonimaging.ca](mailto:ssross@lawsonimaging.ca)

Abstract: Recently, Artificial Intelligence (AI) has shown promising results in solving complex problems, especially related to vision tasks when using deep-learning techniques such as convolutional neural networks (CNN). We will give a short introduction to AI and CNN and demonstrate how deep-learning can be used in medical imaging in a clinically applied setting in areas such as noise reduction, low-dose PET, pseudoCT as used for MR based attenuation correction or even aiding diagnosis or risk stratification.



### BIRC PARTNERS



Department of  
Medical Imaging

